



Ecological connectivity and green infrastructure in strategic spatial planning

Koper, 19. september 2017

Blanka Bartol

**Direktorat za prostor,
graditev in stanovanja**

Teden sredozemske obale in makroregionalnih strategij 2017

- 1. Basic premises**
- 2. Territorial visions of and in EU**
- 3. Role of Spatial Planning**
- 4. Planning of GI and ecological connectivity**
- 5. Conclusion**

1. Basic premises

- Sustainable development ► Economic, social and territorial cohesion ► policy aims tailored to specific territory – the role of spatial planning approach and tools!
- Intrinsic values of environment and nature ► New ecological ethics ?
- Competing for common space ► Planning for multiple synergies prioritized

2. Territorial visions

- No EU common spatial development vision, yet strong influence of EU sectoral policies on MS's spatial planning
- EU territorial vision not sum of national spatial visions

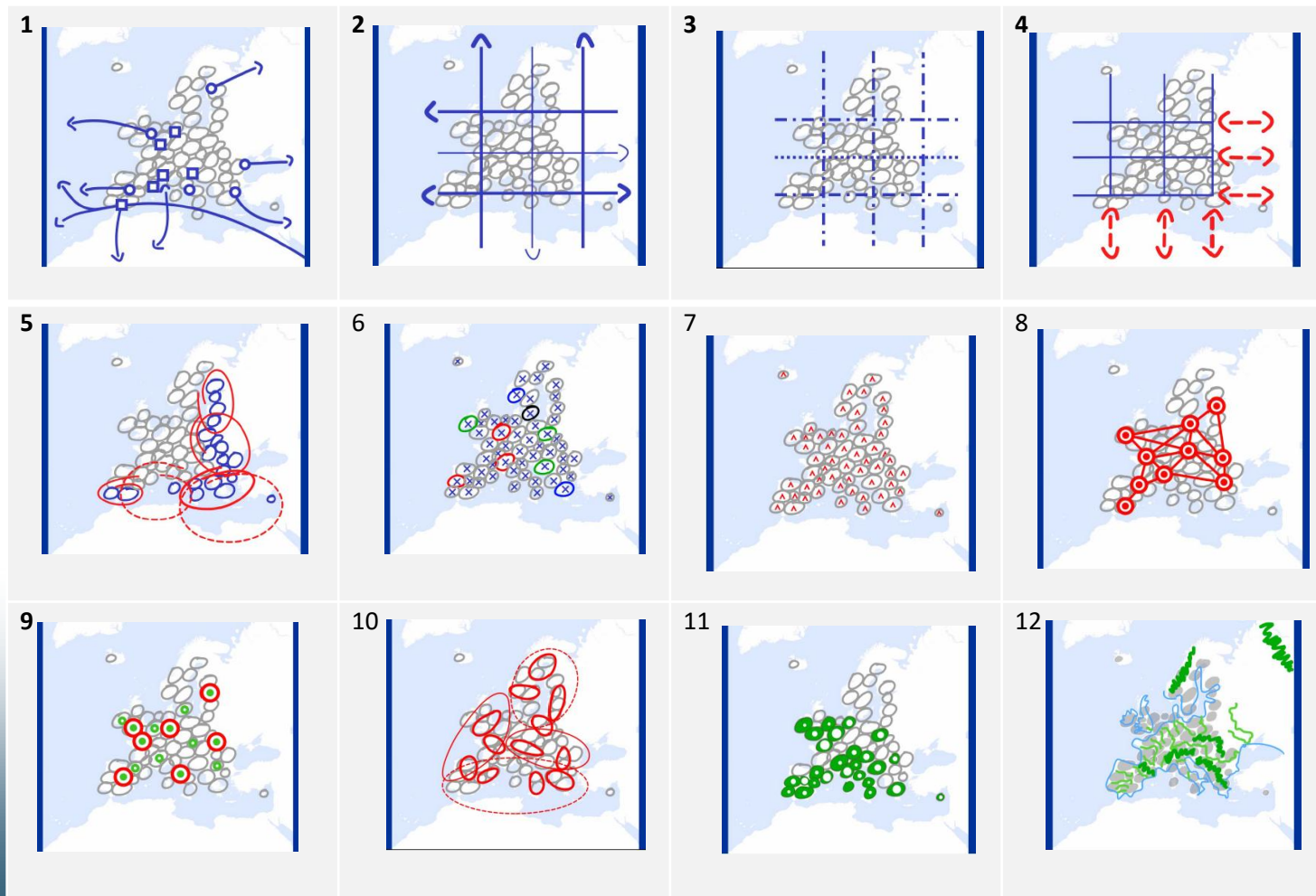


Territorial Vision 2050: Making Europe Open and Polycentric

- Connecting Europe Globally
- Co-development with neighbouring regions
- Unleashing regional diversity and endogenous development
- Supporting balanced urban structure
- Managing natural resources sustainably



Territorial Vision: Making Europe Open and Polycentric



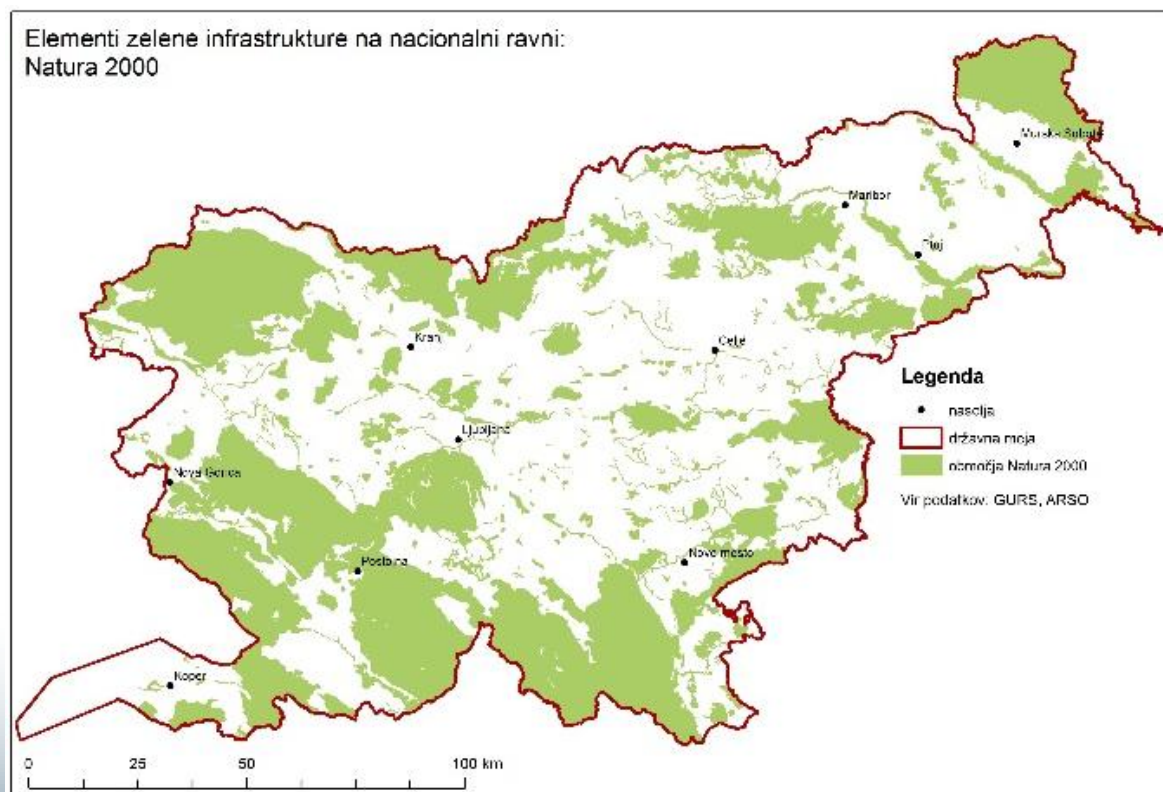
<https://www.espon.eu/programme/projects/espon-2013/applied-research/et2050-territorial-scenarios-and-visions-europe>

3. Role of spatial planning

- Planning system depends on legislative system and planning culture
- Spatial planning bases on democratic process involving administration, experts, general public and politicians.
- Different aspects of development tackled at the same time, analyzed, compared, assessed, debated, reconciled
- Level of detail: strategic (concepts, zoning), detailed (land use)
- Spatial planning enables to define strategic concepts and follow them at lower levels of planning due to (usually) hierarchical system of spatial plans.
- Strong competition for the same spatial resources - instead of win-loose situation, searching for win – win options through planning procedures

4. Planning of GI and ecological connectivity

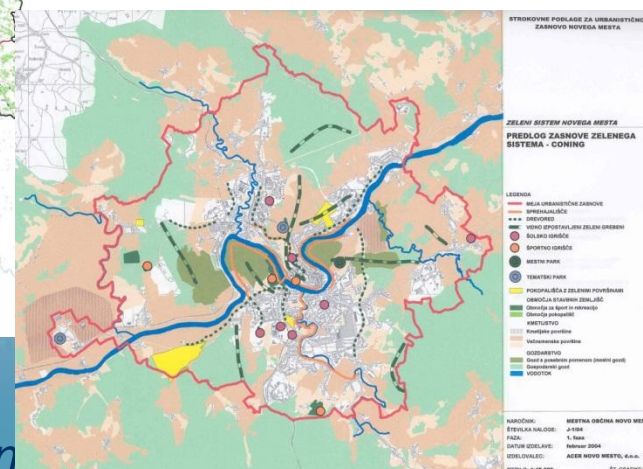
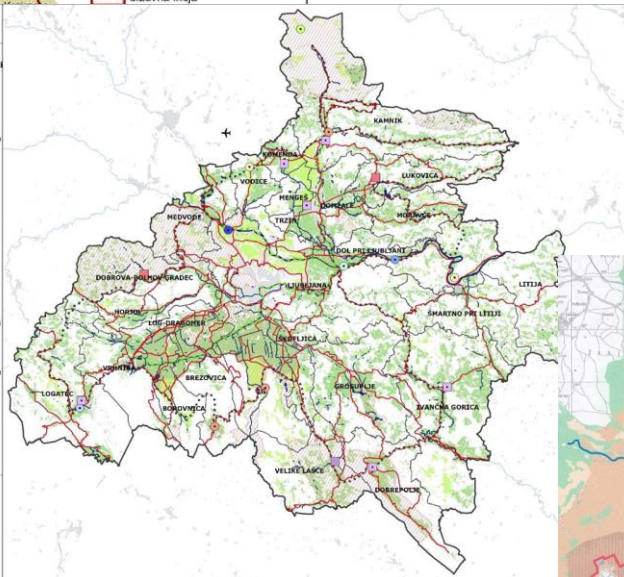
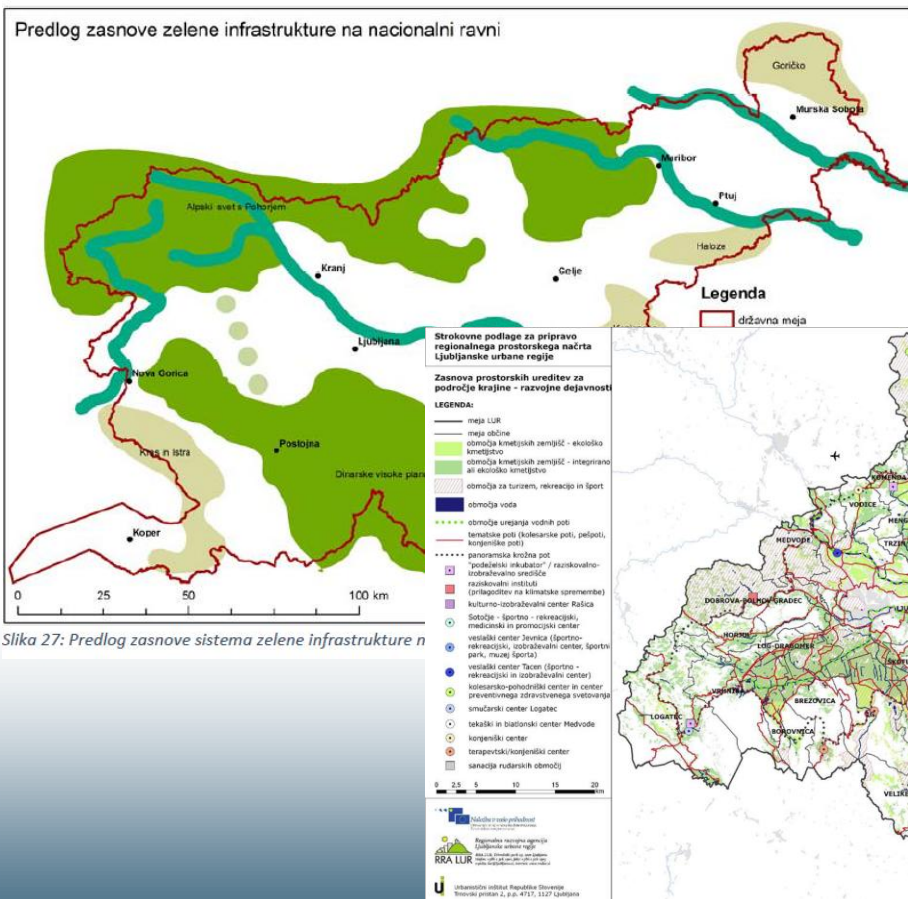
- Why existing system with protected areas and Nature 2000 areas is not enough?
- Needs to preserve nature also outside protected areas can only be efficiently achieved through involvement of all relevant stakeholders in spatial planning process



- Planning green infrastructure means recognizing or assigning specific functionality to different spatial elements and connecting them in a multifunctional system – elements need to be defined, green infrastructure can be a planning element
- Green infrastructure can include not only natural areas, but also culturally important landscapes, agricultural land, retention areas ...
- At different levels different functional elements can prevail, i.e. ecological function at national level, social or morphological at regional or city level etc.
- GI cannot be defined as scientific approach but in collaboration with other actors within spatial planning process, since commonly agreed solution are than followed by implementation (sectoral plans, management measures,...)

Concept at state level ► regional level ► local/city level

Necessary connections
to core structures at
higher level and further
implementation of
lower levels



5. Conclusions

- Introducing ecological connectivity in spatial planning - starting at strategic level when defining a concept, major elements.... and looking across borders (state, regional, municipal, ... sectoral)
- In spatial planning terms spatial elements and requirements for ecological connectivity and green infrastructure have to be defined clearly and in advance for entering into planning process
- Planning green infrastructure - multifunctionality and making synergies should be preferred criteria



Blanka.bartol@gov.si