

Implementing ecological connectivity in spatial planning - a long lasting process of conversation

Koper, 19.9.2017

Amt der Salzburger Landesregierung
Abteilung 5: Natur- und Umweltschutz, Gewerbe
A-5020 Salzburg, Michael Pacher Straße 36

Mag. Gundi Habenicht



From design to implementation...

Basics

Preliminary

Bringing to LIFE

Results

- Functional and legal basis for ecological connectivity
- Planning Green Corridors
- Connecting scientific and local dimension
- Lessons to learn



Ecological Connectivity

Legal Demand

- Convention on Biological Diversity (CBD, 1992)
- Habitat Directive (FFH-RL 92/43/EWG Art.10)
- Alpine Convention - Nature protection and landscape conservation (BGBL. III Nr. 236/2002)

Significance

- Specific Habitat Requirements

Green Corridors
Connecting woodland, migratory species

- Facilitating seasonal and daily movements
- Adaption to environmental and climate changes

Habitat Network = Cross Border Cooperation

Federal State Agency of Salzburg

Department of Nature Conservation



- Defragmentation
- Landscape protection
- Habitat protection
- Recreation

Hunting Association



- Responsibility for migratory wildlife species like red deer (*Cervus elaphus*) as Index species

Department of Spatial Planning

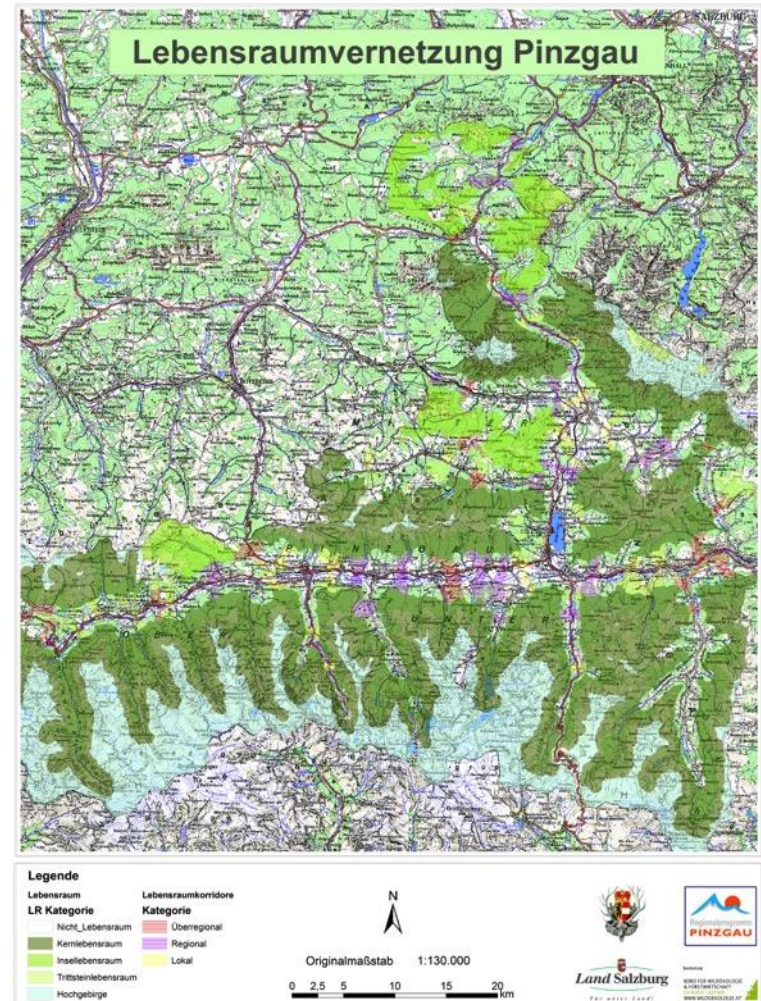


- Distributing and providing area for each demand

Conception

- Project period: 2012-2014
- Intention:
Location of corridors, crossing strongly urbanised valleys to connect core patches of woodland
- Method:
GIS-based least cost path analyses, peer-reviewed, Roe deer as index sp.
- Elaborated by:

BÜRO FÜR WILDÖKOLOGIE
& FORSTWIRTSCHAFT
DI HORST LEITNER
WWW.WILDOEKOLOGIE.AT



Implementing Corridors - a long road to go...

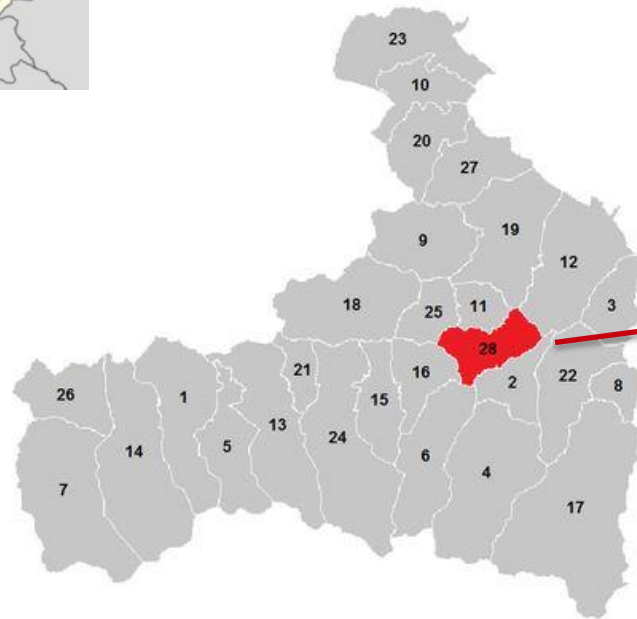
Revision of the local development plan of Pinzgau (LGBL Nr 18/2014)

REGIONALPROGRAMM PINZGAU
Gemeinsam gestalten!

- ✓ Request of implementing corridors in writing and talking..
 - ✓ From erupted reactions to serious concerning
 - ✓ Clearing up misgivings and preoccupation
 - ✓ Collaborating local solutions



District of Pinzgau



Gemeinden im Bezirk Zell am See

- | | |
|-----------------------------------|----------------------------------|
| 1 Bramberg am Wildkogel | 15 Niedersill |
| 2 Bruck an der Großglocknerstraße | 16 Piesendorf |
| 3 Dienten am Hochkönig | 17 Rauris |
| 4 Fusch an der Großglocknerstraße | 18 Saalbach-Hinterglemm |
| 5 Hollersbach im Pinzgau | 19 Saalfelden am Steinernen Meer |
| 6 Kaprun | 20 Sankt Martin bei Lofer |
| 7 Krimml | 21 Stuhlfelden |
| 8 Lend | 22 Taxenbach |
| 9 Leogang | 23 Unken |
| 10 Lofer | 24 Uttendorf |
| 11 Maishofen | 25 Viehhofen |
| 12 Maria Alm am Steinernen Meer | 26 Wald im Pinzgau |
| 13 Mittersill | 27 Weißbach bei Lofer |
| 14 Neukirchen am Großvenediger | 28 Zell am See |



Restrictions

- Significant impacts and functional disturbances of the corridor are forbidden, if there are no compensatory measures possible
- Guideline:

Grünkorridore
im Salzburger
Pinzgau

April 2013

Leitfaden für die Integration von Grünkorridoren
in der regionalen Raumplanung

No predefined prohibition

Implementation of 30 corridors in regional planning of
pinzgau

Convincing arguments



Land Salzburg



- ✓ Protecting rural landscape
- ✓ Urban sprawl
- ✓ Floodwater management
- ✓ Human welfare

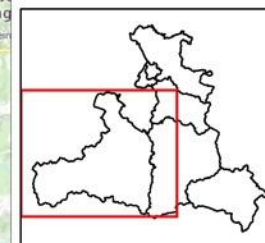
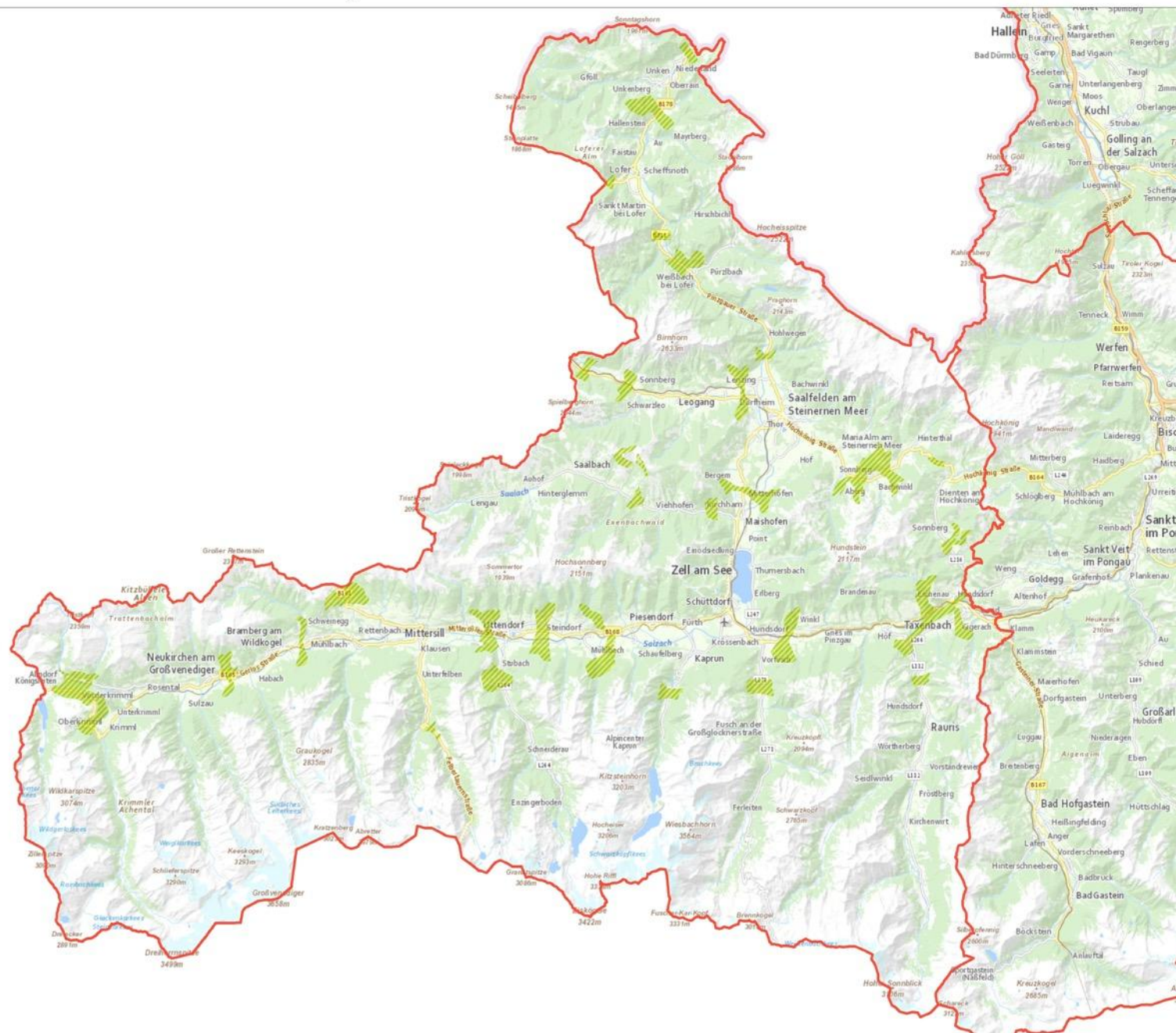


Land Salzburg

Lebensraumkorridore im Pinzgau

Legende

-  Lebensraumkorridore RP Pinzgau (in Bear.)
-  Bezirksgrenzen



1:275.000

0 2.750 5.500 11.000
Meter

Salzburger Geographisches Informationssystem
SAGIS

<http://www.salzburg.gv.at/landkarten>
 E-Mail: natur-fachdienst@salzburg.gv.at
 Bearbeitung: DI Mathias Kürsten; Ref. 05/06
 Erstellungsdatum: 12.09.2017

Datenquelle: (c) SAGIS
 Copyrightvermerk für Welterverwendung
<https://www.salzburg.gv.at/haftung>
 Das Land Salzburg übernimmt keine Haftung
 für Vollständigkeit und Richtigkeit

Pinzgau 2015





Lessons learned...

- Opportunities and limits of spatial planning
- Bottom up or drop down - process?
- The obstacle of binding agreements
- Awareness raising
- ...



