



**EUSALP** EU STRATEGY FOR THE ALPINE REGION

[www.alpine-region.eu](http://www.alpine-region.eu)

## Action Group 1

# ***«Embedding EUSALP macro-regional priorities in the EU programmes 2021-27»***

February 20<sup>th</sup>, 2020 - Brussels

**Anna Giorgi** - Action Group 1 Leader



80 million people, 7 countries, 48 regions,  
mountains and plains addressing together  
common challenges and opportunities



This project is co-financed by the European Union via Interreg Alpine Space



## Action Group 1 Members – 23 members, 6 states

 **Anna Giorgi** - Action Group 1 Leader  
Lombardy Region, IT

 **Umberto Bondi**

USI University of Italian Switzerland, CH

 **Roberta Bottarin**

EURAC Delegate for the Italian Ministry for  
Environment, IT

 **Heribert Buchbauer**

Federal Ministry of Science, Research and  
Economy, AT

 **Marco Bussone**

UNCEM National Union of Mountain Towns and  
Communities, IT

 **Degoul Chantal**

Auvergne-Rhône-Alpes Regional Directorate for  
Enterprises, FR

 **Anke Evertz**

Bavarian Ministry of Economic Affairs and Media,  
Energy and Technology, DE

 **Martina Hartl**

Federal Ministry of Science, Research and  
Economy, AT

 **Philippe Bordeau**

Laboratory of Excellence for Innovation and  
Mountain Territories, FR

 **Susanne Hockling**

Ministry of Science, Research and the Arts of the State of Baden-  
Württemberg, DE

 **Walter Mayrhofer**

FTI Burgenland GmbH, AT

 **Leonida Miglio**

EUPOLIS Lombardy Region, IT

 **Ludovico Monforte**

UNIONCAMERE, Lombardy Region, IT

 **Vincenzina Cristofaro**

University, Research and Open Innovation- Lombardy Region, IT

 **Thomas Probst**

Regiosuisse Netzwerkstelle Regionalentwicklung, CH

 **Michael Keller**

HES-SO Fribourg, CH

 **Manuela Romagnoli**

Ministry of Agriculture and Forestry  
(MIPAAFT), IT

 **Fabrizio Rovatti**

Friuli Venezia Giulia Autonomous Region, IT

 **Margherita Russo**

Italian Ministry for Education, Research and  
University, IT

 **Francesca Spirito**

Friuli Venezia Giulia Autonomous Region, IT

 **Tina Ušaj**

Ministry of Education, Science and Sport, SI

 **Petra Žagar**

Ministry of Education, Science and Sport, SI

 **Dino Zardi**

Autonomous Province of Trento, IT

 **Ivan Boesso**

Veneto Innovazione, Regione Veneto, IT



## Action Group 1 Observers



Internationale  
Bodensee  
Hochschule



**International  
Scientific  
Committee on  
Research in the  
Alps (ISCAR):**

- Ursula Schüpbach
- Leopold Füreder

**Joint Research  
Center (JRC):**

- Aleš Gmanus

**European  
Commission**

- Filomena Carvalho
- Astrid Aulnette
- David Matzek-Liechtenstein

**International  
Bodensee  
Hochschule**

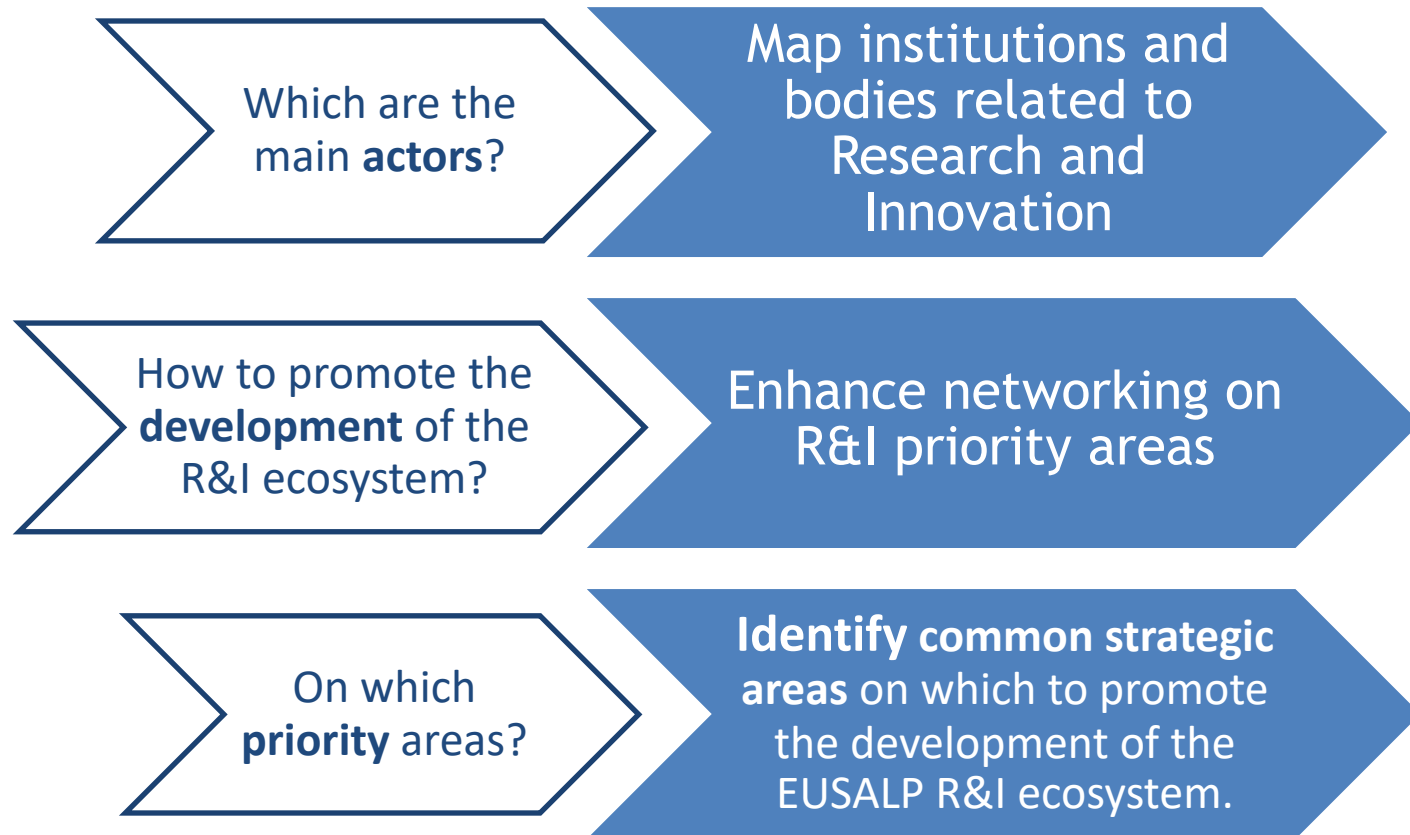
Markus  
Rhombert

***Italian  
network of  
ANCI, UPI and  
Consortia of  
Local  
Autonomies  
for Alpine  
Regions***



## ACTION GROUP 1:

### *TO DEVELOP AN EFFECTIVE RESEARCH AND INNOVATION ECOSYSTEM*



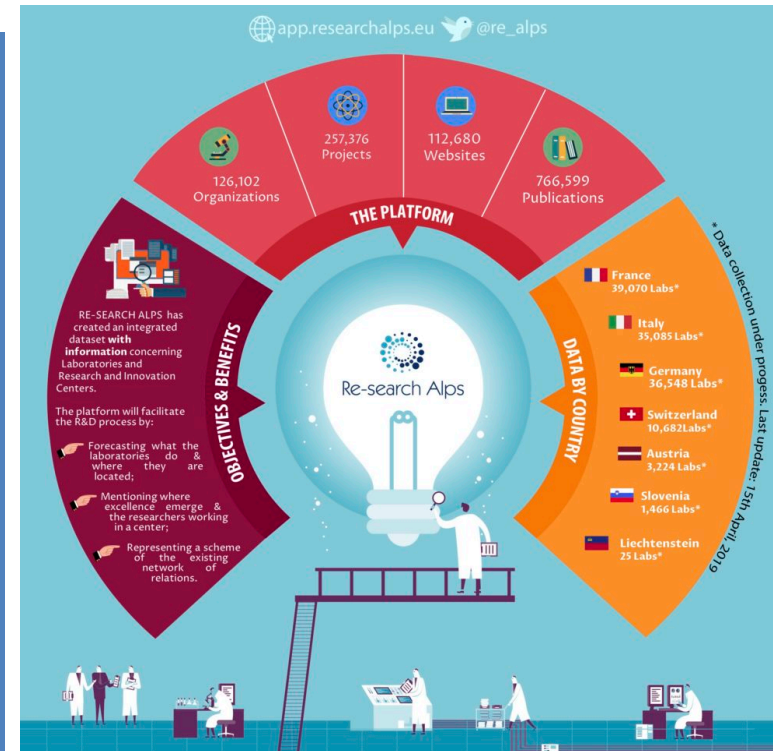


## Strategic output 1: Mapping Research Centers and Laboratories in the Alpine macro-region

Re-search Alps is a project (INEA CEF Telecom) built to have access to a comprehensive database of the Research and Innovation Centres and Start-UPS working within in the 7 EUSALP States displaying:

- **Where** they are located,
- Which **topics** they focus on,
- Which is their active **network** of collaboration.

**This platform is in need of continuity.**



Co-financed by the European Union  
Connecting Europe Facility

Agreement No INEA/CEF/ICT/A2016/1296967



The platform is available at the following  
link: [app.researchalps.eu](http://app.researchalps.eu)

## Strategic output 2: Development and Release of a common R&I platform

The tools implemented by the AG1 in the EUSALP website are:

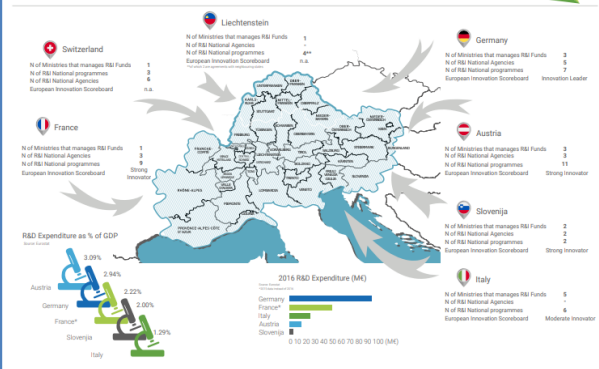
- (i) **Virtual platform** to foster knowledge exchange (online AGs meetings, webinars),
- (ii) **Collection of data** concerning the R&I ecosystem
- (iii) **Map of the governance** in the Research and Innovation field

The EUSALP website (PoK section) contains a web-based platform developed to facilitate:

- (i) **networking,**
- (ii) **connections and**
- (iii) **knowledge exchange,**

while making different target groups aware about EUSALP, its projects, results and impacts.

### Research and Innovation National Funds



### EUSALP PLATFORM OF KNOWLEDGE

#### LEARNING & MEETING

View Edit Track Nodequeue



**EUSALP e-Learning platform** is aimed to deliver useful contents produced by AGs concerning their main topics of interest and work. It allows to open conversation conversation and collaboration between offering AGs and between AGs and external targets - including people, while consolidating and sharing knowledge that becomes readily available for users, regardless of their geographic location and their time zone.

**EUSALP meeting rooms** are aimed to support EUSALP Groups to organize and manage their meetings in a time and costs saving way. Meeting are organized in this area according to their date and typology, can be searched and when active, invited users can join them.





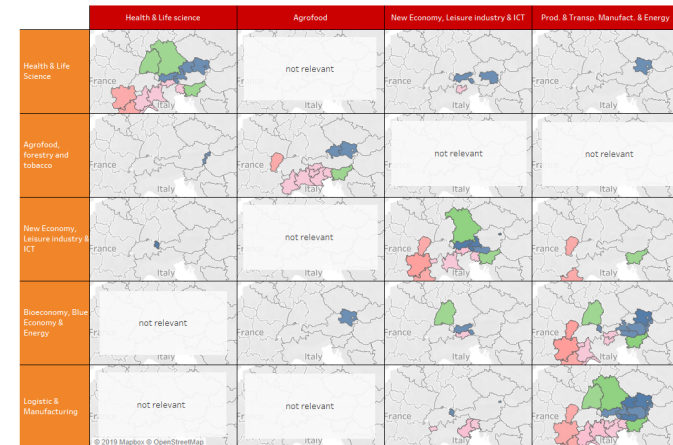
## Strategic output 3: Mapping priorities in the Research and Innovation field

AG1 has analysed **the main patterns and characteristics in RIS3 priorities in the EUSALP area** (excluded non-EU Countries) outlining:

- **Classification of priorities' topics** grounded on automatic text analysis and controlled by experts;
- **Priority matching to identify common strategic areas** on which to promote the development of the EUSALP R&I ecosystem;
- Method to **systematically update priorities' classification**.

Common priority areas:

- **"Bio economy, Blue Economy & Energy",**
- **"Energy Production, Efficiency & Sustainability",**
- **"Logistic and Manufacturing "**



The interactive tool is now available on the EUSALP website:

<http://bit.do/RImapping>



## Strategic output 2: Mapping the governance in the Research and Innovation field

This research has been recognized for its importance within the International Scientific Community.

### SCIENTIFIC PAPERS

- Russo, M., Pagliacci, F., Pavone, P., & Giorgi, A. (2019). *RIS3 in macroregional strategies: tools to design and monitor integrated territorial development paths*. In ESPON Scientific Conference “Building the Next Generation of Research on Territorial Development”, London (Vol. 14).
- Pagliacci, F., Russo, M., Pavone, P., Giorgi, A. (2019). Regional structural heterogeneity: Evidence and policy implications for RIS3 in macro-regional strategies, *Regional Studies*. DOI: 10.1080/00343404.2019.1635689;
- Pavone, P., Russo, M., Pagliacci, F., Giorgi, A. (2019). [R&I smart specialisation strategies: classification of EU regions' priorities. Results from automatic text analysis](#). DEMB WORKING PAPER SERIES n.148.ISSN: 2281-440X;
- Russo, M., Pagliacci F., Pavone, P., Giorgi, A. (2019). [RIS3 in macro-regional strategies: tools to design and monitor integrated territorial development paths](#). DEMB WORKING PAPER SERIES n.145.ISSN: 2281-440X;
- Russo, M., Pavone, P., Pagliacci, F., Righi, S., Giorgi, A. (2019). [Detecting multidimensional clustering across EU regions. Focus on R&I smart specialisation strategies and on socio-economic and demographic conditions](#). DEMB WORKING PAPER SERIES n.142. ISSN: 2281-440X;
- Scagliarini, S. (2018). [The allocation of responsibilities between the central state and local authorities in the countries of the alpine area](#). DEMB WORKING PAPER SERIES n.125. ISSN: 2281-440X.





The data repositories and databases (such as **Re-Search Alps**, the **PoK**) are in need of a stable structure and continuity in order to promote R&I in the Alpine Region.





# Strategic requests relevant for the **Action Group 1**



## Combined calls for cross-regional R&I projects



The importance of macro-regions in the context of transformation, innovation and climate is growing. The full innovation potential of the Alpine Region can only be unleashed if barriers for cooperation are reduced.

To put the Alpine Region in the driving seat for innovation-driven cooperation, an **Alpine-specific funding scheme** needs to be put in place

### R E Q U E S T



Define specific mechanisms in the assignment of the **ERDF (European Regional Development Fund)** facilitating **cross-regional** collaboration and **synchronized calls for R&I projects** addressing the major EUSALP challenges.



# Alpine Universities for a Green Transition



Universities and Research Centres **can make an important contribution to meet the challenges of the green transition of the Alpine Region** and to foster the implementation of the **EU Green Deal**.

## R E Q U E S T



Establish a **governance framework for university cooperation in the Alpine Region** to foster their cooperation in R&I and education with trough an EUSALP branch of:

- Marie Skłodowska-Curie program
- ERASMUS+

focused on EUSALP specific priorities and challenges (e.g. bioeconomy, energy, biodiversity conservation and valorisation)



# Promote an Alpine Region Agrobiodiversity Strategy

The Alpine Region contains Europe's largest mountain range with a substantial poorly known and valued **agrobiodiversity heritage**. These resources (local breeds and plant varieties ) can represent a strategic asset both for mountain and urban EUSALP's areas for **the development of sustainable local food supply chains** and as a **source of raw material for the formulation of novel & functional food** or having a key role for developing quality products for niche markets.

These resources are particularly concentrated in **the mountain areas of the Alpine Region and their conservation & valorization could contribute to the reduction of the gap between urban and mountain areas** (EUSALP 1<sup>st</sup> Objective).



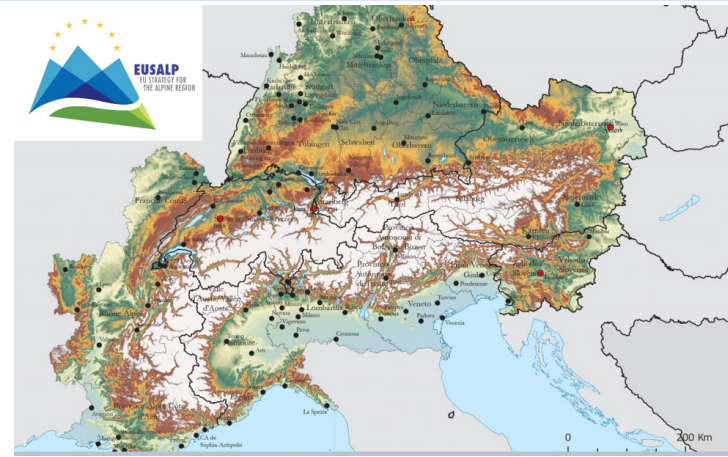
**EUSALP** EU STRATEGY FOR THE ALPINE REGION

## R E Q U E S T



Implement calls on EU funds for the **mapping, characterization and valorisation of the agrobiodiversity heritage** of interest for R&I, Cooperation, Agriculture and Food Industry areas.

- **Horizon Europe**
- **Interreg Alpine Space**
- **COSME**
- **ERDF (CAP)**





# Thanks for the attention!

**Anna Giorgi** - Action Group 1 Leader  
[ag1.leader@alpine-region.eu](mailto:ag1.leader@alpine-region.eu)