



**Cross-border mobility  
in the Alpine Region**  
Co-financed by the European Parliament through the  
Alpine Region Preparatory Action Fund (ARPAF)

# Cross-border mobility in the Alpine Region

## Sustainable mobility solutions for the local level



Picture: Heinz Heiss\_Zeitenspiegel





# A common project of AG4 + 5

**Pillar 1:** Economic growth and innovation

**Objective:** Fair access to job opportunities, building on the high competitiveness of the Region

**AG1:** To develop an effective research and innovation ecosystem

**AG2:** To increase the economic potential of strategic sectors

**AG3:** To improve the adequacy of labour market, education and training in strategic sectors

**Pillar 2:** Mobility and connectivity

**Objective:** Sustainable internal and external accessibility to all

**AG4:** To promote inter-modality and interoperability in passenger and freight transport

**AG5:** To connect people electronically and promote accessibility to public services

**Pillar 3:** Environment and energy

**Objective:** A more inclusive environmental framework for all and renewable and reliable energy solutions for the future

**AG6:** To preserve and valorise natural resources, including water and cultural resources

**AG7:** To develop ecological connectivity in the whole EUSALP territory

**AG8:** To improve risk management and to better manage climate change, including major natural risks prevention

**AG9:** To make the territory a model region for energy efficiency and renewable energy

CROSS-CUTTING POLICY AREA: GOVERNANCE, INCLUDING INSTITUTIONAL CAPACITY

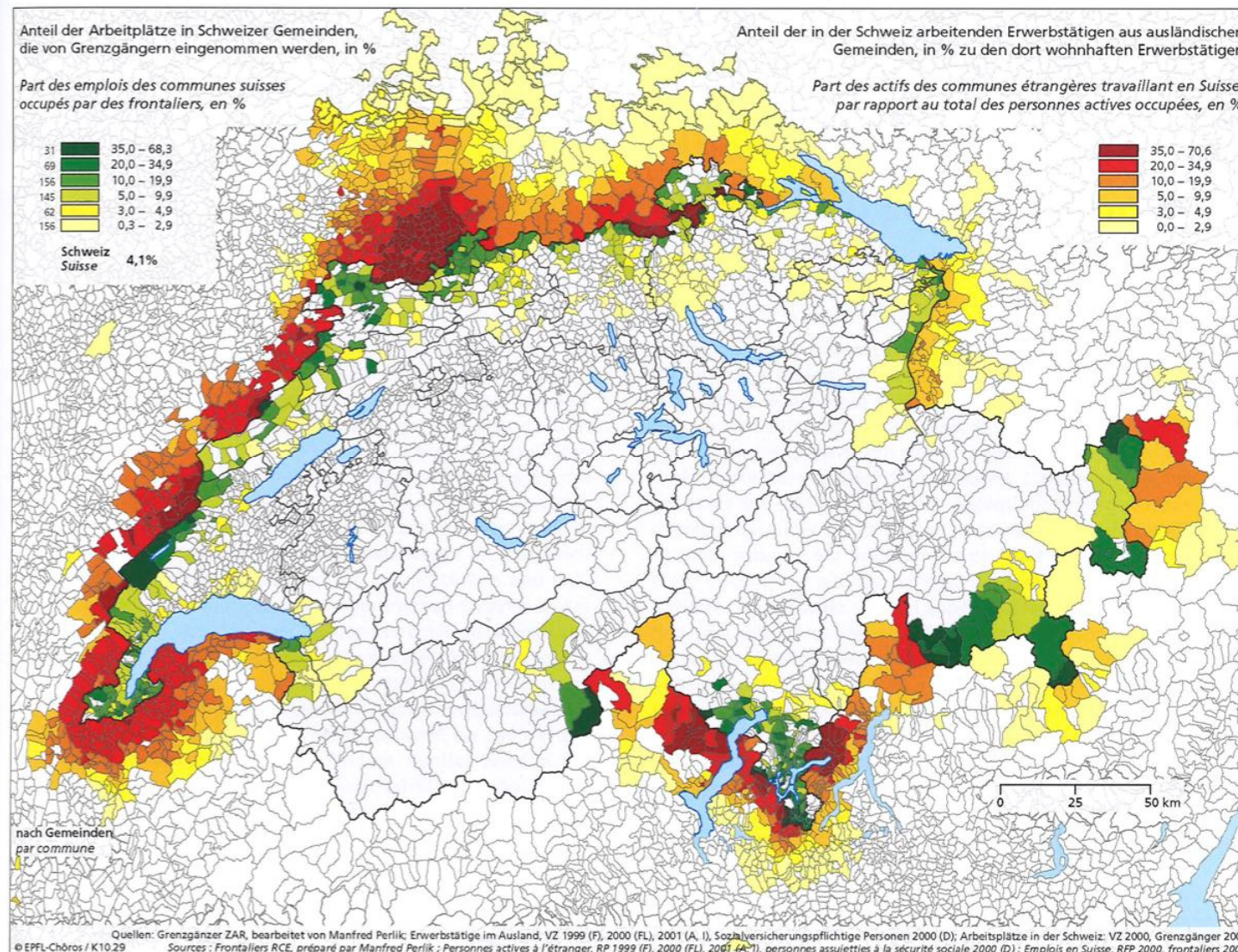
**Objective:** A sound macro-regional governance model for the Region (to improve cooperation and the coordination of action)



# An underestimated phenomenon

Grenzgänger: Wohn- und Arbeitsgemeinden, 2000

Frontaliers : communes de domicile et de travail, en 2000

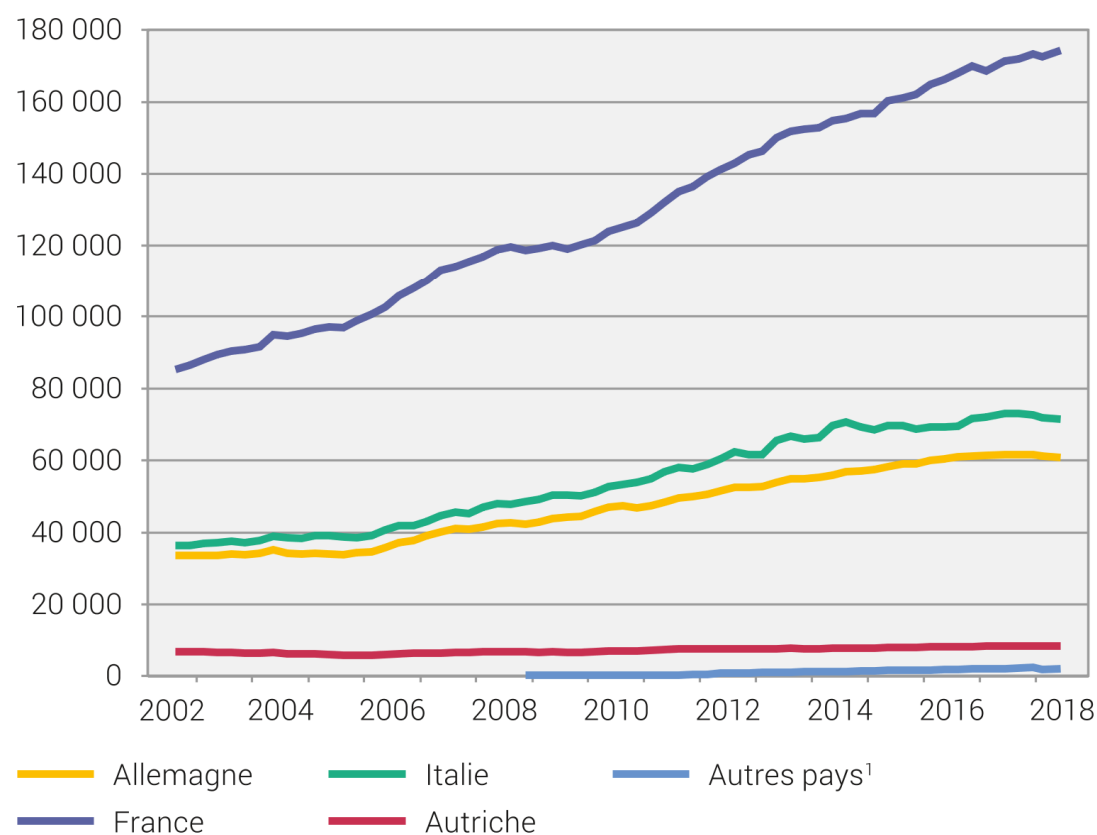


Picture: Modis 2002



# Ever increasing?

## Frontaliers étrangers selon le pays de résidence



<sup>1</sup> y compris la Principauté du Liechtenstein: 441 personnes au 2<sup>e</sup> trimestre 2018





**Cross-border mobility  
in the Alpine Region**  
Co-financed by the European Parliament through the  
Alpine Region Preparatory Action Fund (ARPAF)

# LEADING QUESTION

What is needed for a successful modal shift in trans-national commuter mobility to reduce negative ecologic and economic effects?





**Cross-border mobility  
in the Alpine Region**  
Co-financed by the European Parliament through the  
Alpine Region Preparatory Action Fund (ARPAF)

# What it's about?

With a focus on cross-border commuter mobility the projects helps to...

- remove infrastructure bottlenecks
- bridge missing links
- coordinate planning and timetables of public transport
- modernising infrastructure
- enhance co-operation
- connect people with digital accessibility and reduce passenger flows





**Cross-border mobility  
in the Alpine Region**  
Co-financed by the European Parliament through the  
Alpine Region Preparatory Action Fund (ARPAF)

# WHY?

- Transport networks have been planned for decades in a purely national context;
- This holds particularly true for public transport systems;
- Most of cross-border commuter flows are by cars;
- Consequence are congested roads with negative impacts on economy, society, environment;





# BUT

- Cross-border commuter traffic is sparsely on the political agenda, overlooked by road freight traffic and tourism/leisure mobility;
- Commuter mobility offers a great chance to
  - contribute to reduction emissions (air+noise)
  - contribute to COP21
  - increase quality of life at regional level





# HOW

- Step 1: Elaboration of Alpine wide overview and analysis of existing cross-border mobility networks for commuter mobility
- Step 2: Collection of existing cooperation models (Good/Bad Practices)
- Step 3: Identification of gaps in cross-border mobility (infrastructure, soft factors, etc.)



# HOW

- Step 4: Identification of solutions to facilitate cross-border passenger flows
- Step 5: Formulation of recommendations for further actions
- Step 6: Workshops in Hot-Spot areas for elaboration of Action-Plans



# WHAT'S THE BENEFIT?

- Overview on commuter passenger flows in the Alpine Space (modal split, transport width, passover volume, etc.)
- Increased alpine-wide awareness of cross-border commuting problems (homemade problems)
- Collection of existing cross-border solutions to learn from good and bad practices
- Target group tailored solution approaches for commuters, enterprises, transport providers, public authorities;
- Action plans in “Hot Spot” areas towards modal shift



Cross-border mobility  
in the Alpine Region  
Co-financed by the European Parliament through the  
Alpine Region Preparatory Action Fund (ARPAF)

# FURTHER INFORMATION

Swiss Center for Mountain Regions SAB

[Thomas.egger@sab.ch](mailto:Thomas.egger@sab.ch); [peter.niederer@sab.ch](mailto:peter.niederer@sab.ch)

Office of the Tyrolian Government, Department of Transport  
Planning

[Ewald.moser@tirol.gv](mailto:Ewald.moser@tirol.gv); [patrick.skonieczki@tirol.gv.at](mailto:patrick.skonieczki@tirol.gv.at)

CIPRA International

[Wolfgang.pfefferkorn@cipra.org](mailto:Wolfgang.pfefferkorn@cipra.org); [jakob.dietachmair@cipra.org](mailto:jakob.dietachmair@cipra.org)







# Program of the Workshop

- Analysis of existing cross-border mobility networks  
Prof. Dr. Tobias Chilla, University of Erlangen
- Cross-border cooperation models in the Alpine Region  
CIPRA International
- A practical experience: Youth Alpine Interrail  
Magdalena Chrsitandl, CIPRA Youth Council
- Panel discussion
  - Carlo Alberto Carnevale Maffé, Bocconi School of Management
  - Tobias Chilla
  - Marion Ebster, CIPRA International



# Aims of the Workshop

- To present the intermediate results of the project
- To discuss solutions
- To connect with past and ongoing projects
- To raise political and public awareness
- To stress the relevance of the work of EUSALP
- To underline the potential for cooperation among AG's
- To involve the youth