



Food and Agriculture
Organization of the
United Nations

Global alliances for managing Forests in a Changing Climate

Yuka Makino

Team Leader

Water and Mountains Team, Forestry Department, FAO

Mountain Forests and the Sustainable Development Goals (2015-2030)



Alliance and Partnerships



Global mountain alliances

- The Mountain Partnership (2002)

Global coalitions

- Coalition for Fragile Ecosystems (2017)

Regional mountain conventions

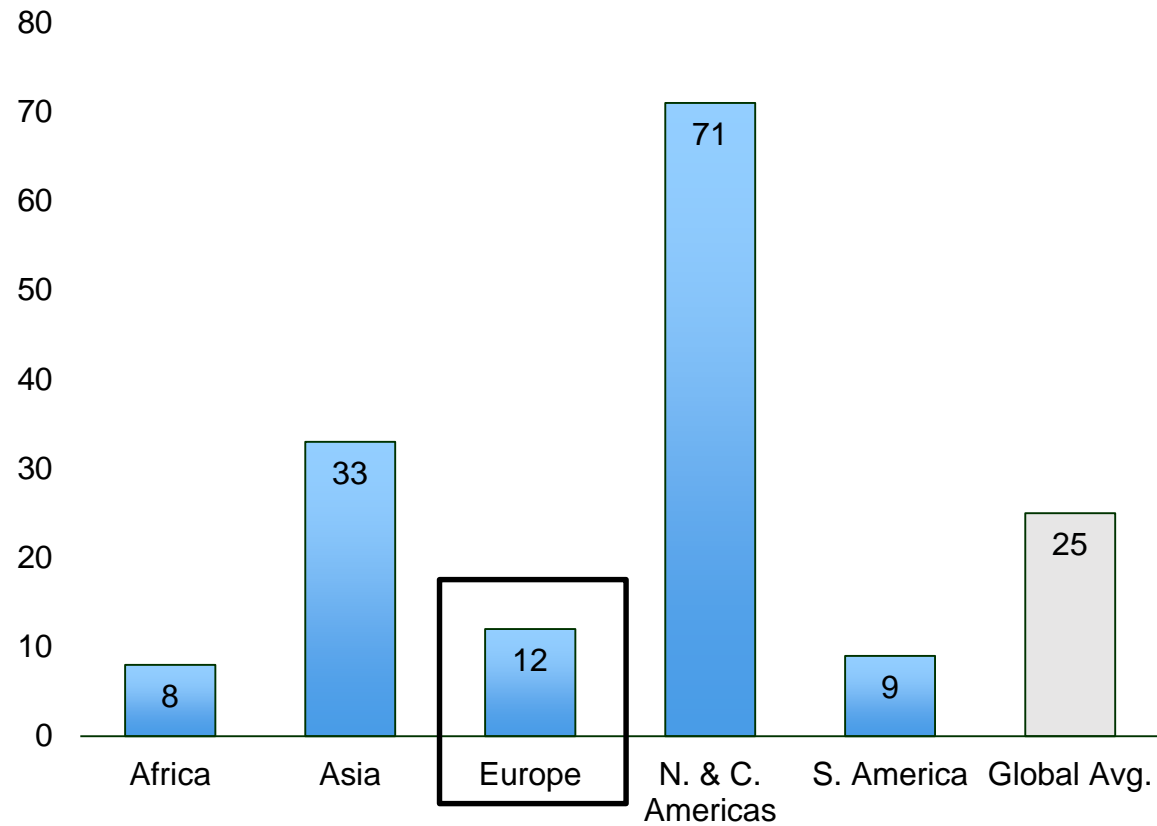
- Alpine Convention (1995)
- Carpathian Convention (2003)

Regional mountain mechanisms

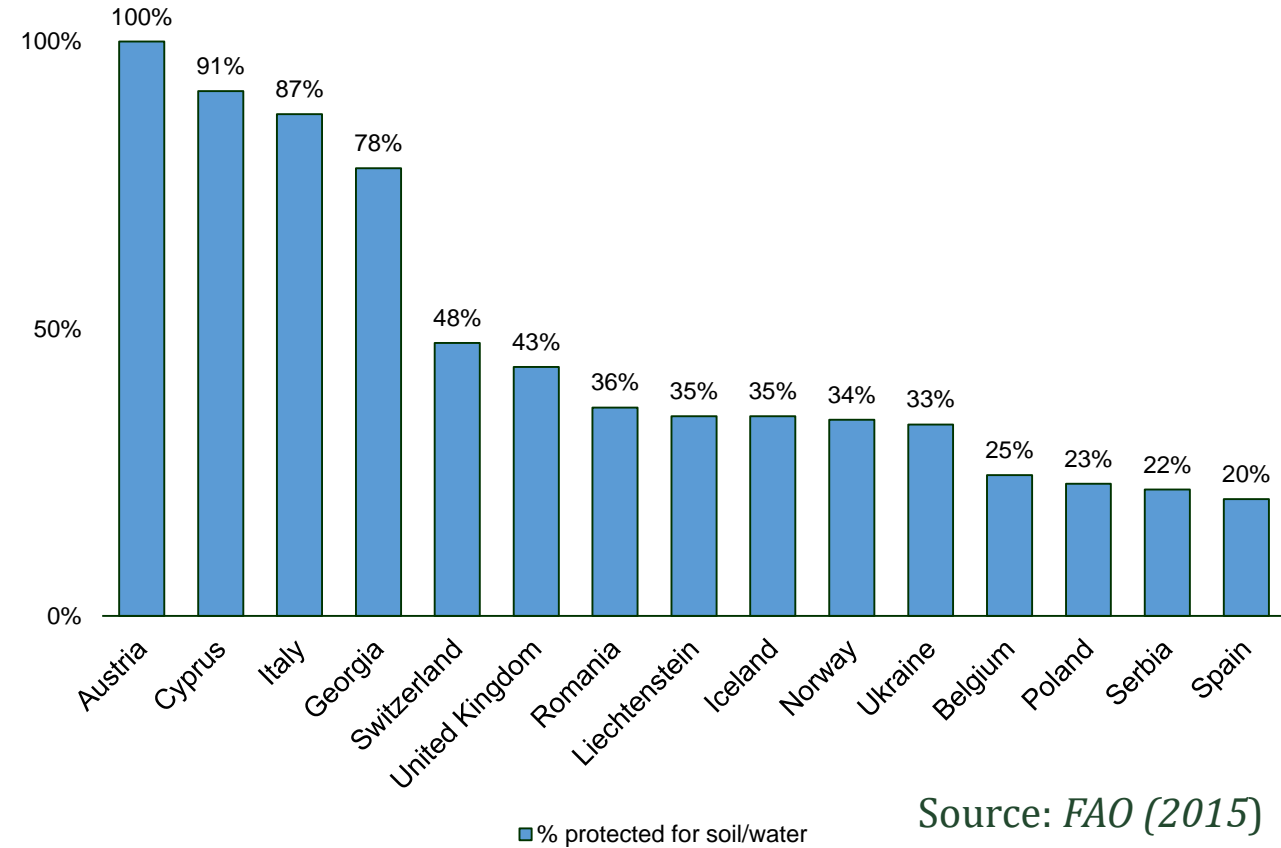
- **EFC Working Party on Management of Mountain Watersheds (1950)**
- Andean Mountain Initiative (2004)
- African Mountains Regional Forum (2014)

Yet **only 25%** of the world's public forests are managed for soil and/or water conservation as a main objective

% Forested Area – Water / Soil Conservation



% Forested Area – Water / Soil Conservation

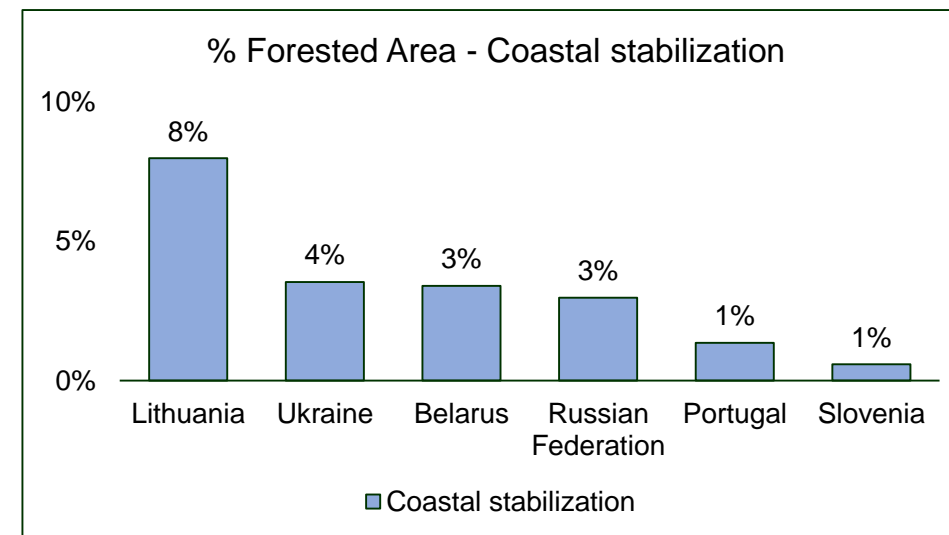
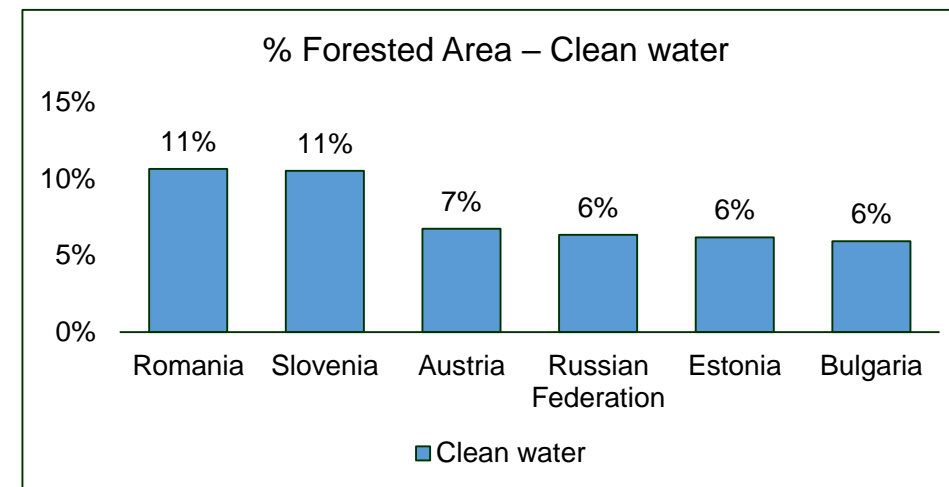
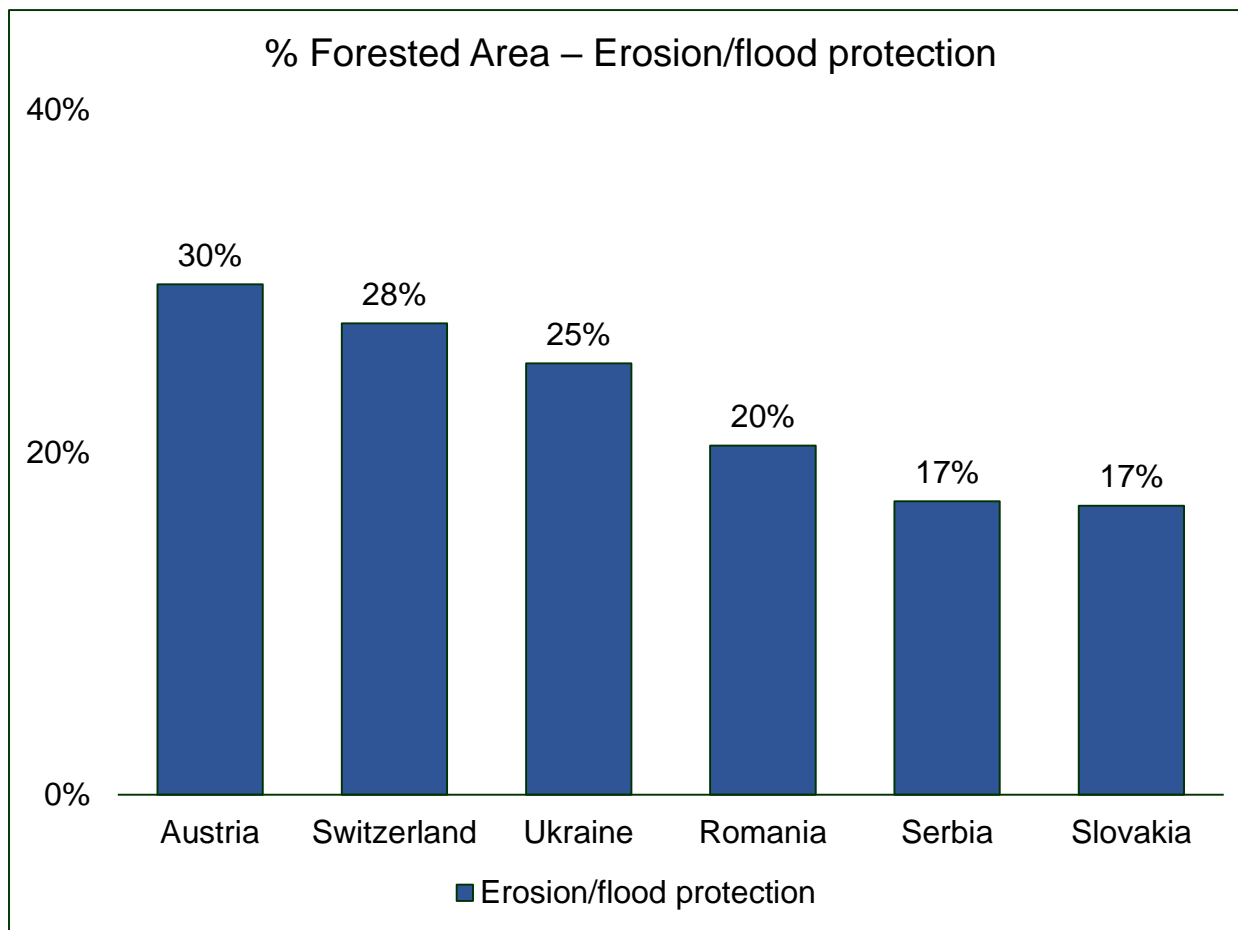


Source: *FAO (2015)*



Food and Agriculture
Organization of the
United Nations

Forests managed primarily for soil and water conservation



Source: FAO (2015)



Food and Agriculture
Organization of the
United Nations

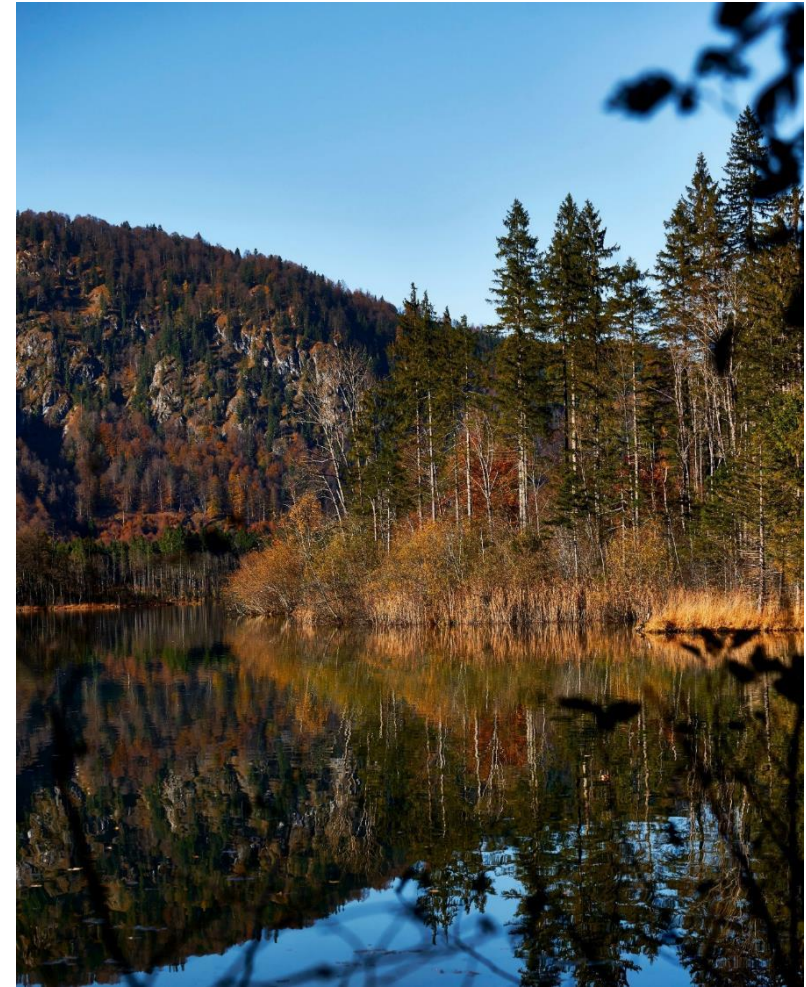
A photograph of a person walking away from the camera on a narrow stone path that winds through terraced rice fields on a steep hillside. The terraces are filled with vibrant green rice plants. In the background, a dense forest covers the upper slopes of the mountain. The person is wearing a white t-shirt, dark shorts, and a colorful striped headband. They are barefoot and holding a wooden stick for support.

FAO's Approach

- **The Landscape Approach**
- **Resilient Livelihoods**
- **Reducing vulnerability to food insecurity**
- **Disaster risk management in agriculture, forestry, fisheries**

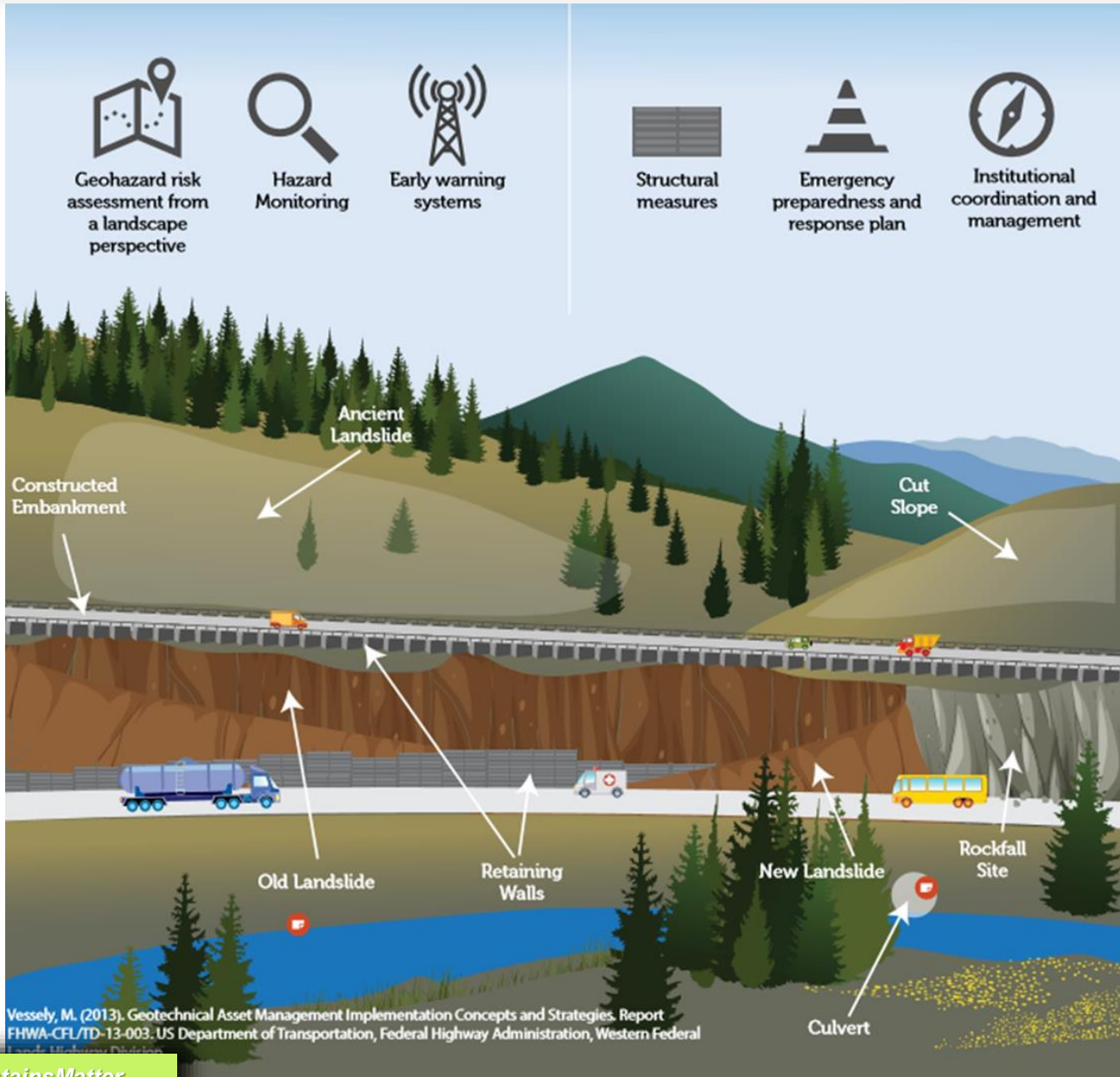
FAO Forestry

- UN Decade on Ecosystem Restoration 2021-2030
- Forest and Landscape Restoration
- Forests and Climate Change: Forest Fires, Pest Management
- National Forest Monitoring
- Forest Products and Statistics
- Social Forestry: Community-based Forestry, Tenure
- Forest Governance and Economics
- Planted Forests Management



Food and Agriculture
Organization of the
United Nations

Resilient Watershed Management

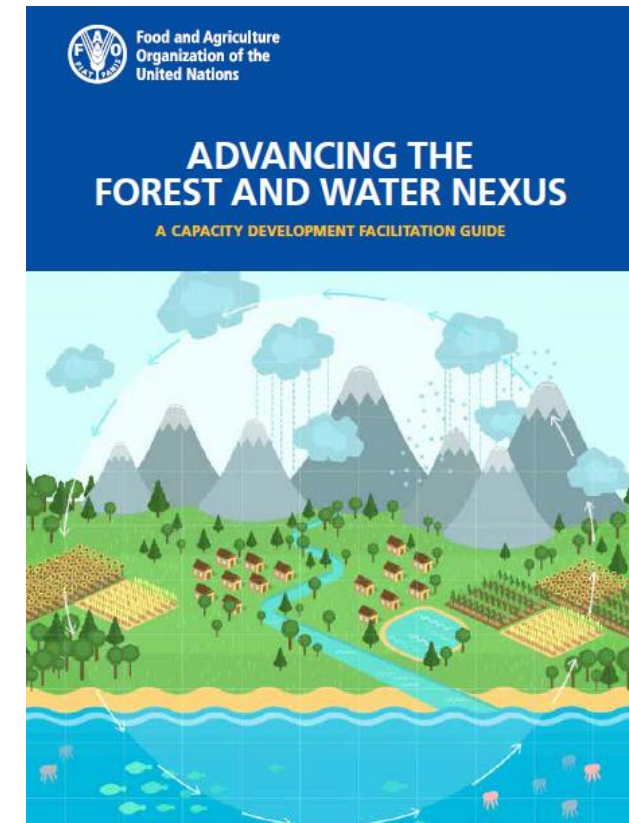
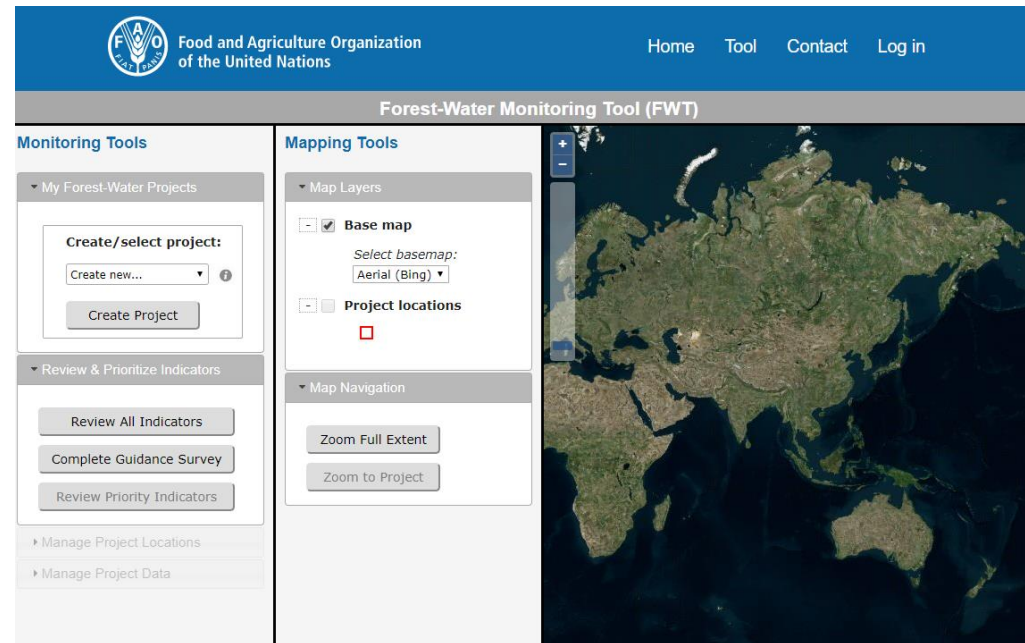


- **Traditional approach:** Reactive & remediates hazards as they occur
- A **proactive approach:** evaluates hazards, monitors the impacts of mitigation measures, manages the infrastructure & development
- Risk management applied to development planning, design & implementation of activities.
- Incorporate: people, environment, hydrology, geology, infrastructure

FAO Forest and Water Program

Forest & Water
monitoring tool

Forest and Water
Nexus Facilitation
Guide



Food and Agriculture
Organization of the
United Nations



Mountain Green Cover Index

Developed to monitor SDG 15.4 Target

SDG 15: Protect, restore and promote sustainable use of terrestrial ecosystems, sustainably manage forests, combat desertification, halt and reverse land degradation, halt biodiversity loss

- **Global baseline** was created in 2017 (Collect Earth)
- **MCGI measured every three years** to monitor its changes (next one in 2020)
- **The MGCI training programme** supports countries to improve the data collection and validation process



The Mountain Partnership

377 members:

The only United Nations voluntary alliance of partners dedicated to improving the lives of mountain people and protecting mountain environments around the world

60 Governments

16 IGOs

293 Major Groups

Secretariat hosted by **FAO**, supported by **Italy**
and **Switzerland**



Mountain Partnership



Food and Agriculture
Organization of the
United Nations



European Forestry Commission

Working Party on the Management of Mountain Watersheds



Overview

The Working Party on the Management of Mountain Watersheds [WPMMW] addresses management of water resources, protective forests and disaster risks in mountain watersheds. It tackles challenges such as soil and biodiversity conservation, torrent control, flood mitigation, avalanche and landslide management and restoration of degraded lands. For over five decades, WPMMW has successfully established dialogue among European mountain stakeholders, such as national policy-makers, technical services, international bodies, researchers and local authorities, and helped to develop a common vision on best practices to promote sustainable development in mountain watersheds.

WPMMW is a member state-driven technical body operating under the umbrella of the European Forestry Commission (EFC), a regional commission established by FAO in 1947. A Steering Committee provides its programmatic orientation and facilitates its activities. FAO provides the Secretariat, supporting members in

terms of logistics and joint initiatives while increasing the visibility of projects. Two Working Groups, one on forests and water and one on hazards and disaster risk management in mountains, put strategic concepts of WPMMW into practice and support the exchange of experience and transfer of knowledge among scientists, practitioners and decision-makers.

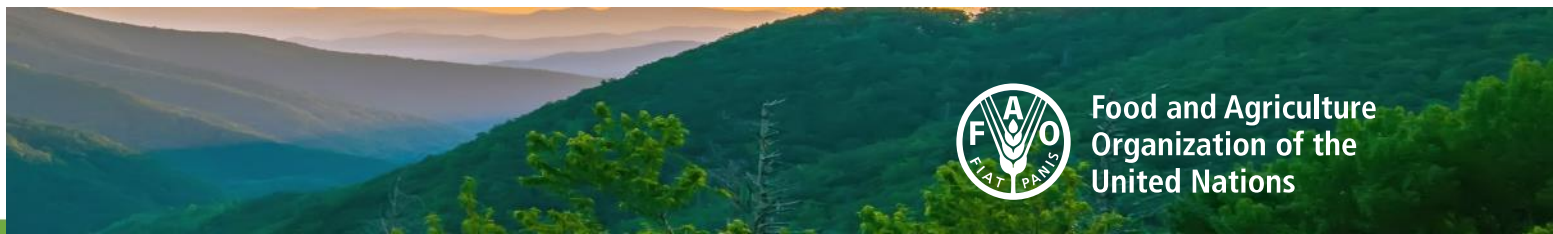
Vision

- promote sustainable development in mountain regions
- enhance the resilience of mountain regions increasingly suffering impacts from climate change, natural hazards and human pressures
- ensure the long-term provision of environmental services both upstream and downstream of watersheds

EFC Working Party on the Management of Mountain Watersheds



- Founded in 1950
- Working Group: Forest and Water
- Working Group: Hazards and Disaster Risk Management in Mountains
- Main achievements



Food and Agriculture
Organization of the
United Nations



Call for action: Governments

**Advocacy for protective forests
in international frameworks**

A scenic landscape featuring a calm lake reflecting the surrounding mountains and a bright sky. In the foreground, there is a field of numerous small white flowers. The overall atmosphere is peaceful and natural.

Call for action: Practitioners

Sharing of experiences

A photograph of a rocky, mountainous landscape with several goats grazing on sparse green grass. The scene is captured from a slightly elevated angle, showing the rugged terrain and the animals' interaction with the environment. The text is overlaid on the top left of the image.

Call for action: Research

**Close the knowledge gaps to
address socio-political questions**



Food and Agriculture
Organization of the
United Nations

Contact:

Yuka Makino
yuka.makino@fao.org